



94th Edition

Polk County Traffic Incident Management Team

March 2021



INSIDE THIS ISSUE:

Florida 511: Realtime Live Camera Feed Now Available 1

Webinar: Texting While Driving 1

Speeding has Significantly Increased on the Roadways 2

Upcoming Events  
TIM Team Meeting:

Thursday  
April 15, 2021  
10:00 am

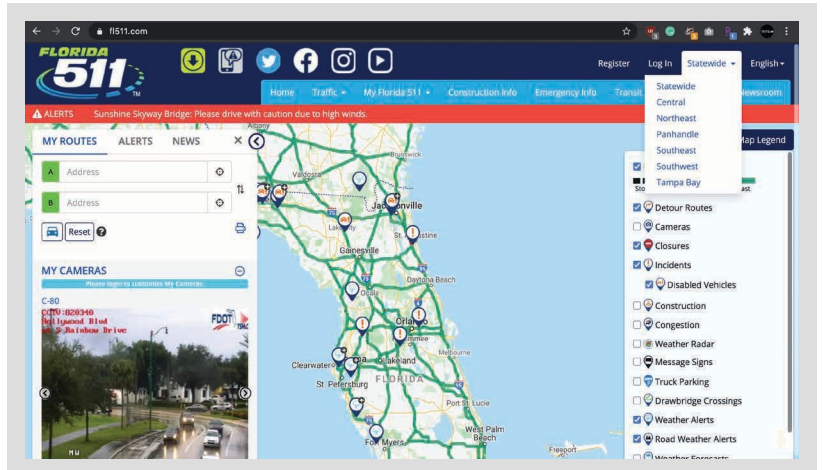


### The Florida 511

Realtime Live Camera Feed Now Available

The Florida 511 now has active live camera feed that allows the user to view live traffic along the roadways. This new feature is another great tool for first responders as they can view a specific traffic incident for such things as scene size up for equipment, best route to take when responding to an incident and other time saving tools.

The homepage features an interactive traffic map which you can zoom out to view the entire state or zoom in to view a specific area. You can click on "My Routes" tab on to create a route, and receive driving directions with travel times and incidents along that route.



Select what you want to see on the map by checking the category you are interested in from the "Map Legend". You are also able to click multiple layers to be displayed and can choose the information to be included. Some examples include; Traffic cameras showing updated images with time/date stamps, Closures indicating if there is a complete closure of a roadway, Incidents including crashes, road closures, and weather-related traffic alerts, Location of disabled vehicles that may be blocking a lane of traffic or on roadway shoulders, Planned or emergency construction on covered roadways, Traffic speeds along major roadways and selected arterials, and Detour routes are shown on the map for road closures when available. Please attend the next TIM Team meeting in April where we will provide a live demonstration of the new camera system and how it will be beneficial to first responders. To learn more, please visit the Florida 511 website at: <https://fl511.com/>

### Webinar: Texting While Driving

#### Implications of Legislation on Electronic Devices

Distracted driving is a top concern among the first responder community. Distracted driving is any activity that diverts attention from driving, including talking or texting, anything that takes the attention away from the task of safe driving. Texting is the most alarming distraction.

The Transportation Research Board (TRB) will host a webinar on Monday, March 15, 2021 from 1:00-2:30 PM Eastern that will review current electronic device use laws and enforcement strategies. Presenters will discuss **public awareness strategies and successes in various jurisdictions**. They will also identify key deliverables designed to share best practices. This webinar is sponsored by the TRB Standing Committees on Traffic Law Enforcement, Human Factors of Vehicles, and Impairment in Transportation. It also features research from the Behavioral Traffic Research Program's first report, Using Electronic Devices While Driving: Legislation and Enforcement Implications. To learn more and to sign up for the webinar, please visit the following website: <https://www.ghsa.org/events/upcoming/TRB/BTSCR-P-Distracted-Driving21>. Please note that registration requires an account with MyTRB, which you can sign up for [here](#).



### Speeding has Significantly Increased on the Roadways

During the pandemic and even with a stay-at-home in place in some areas, there has been a significant increase in speeding on the roadways. Traffic safety officials stating less crowded roadways may be a contributing factor. Speeding-related fatalities account for a considerable proportion of U.S. road trauma, historically comprising approximately one-third of total fatalities.<sup>1</sup>

Many states have reported alarming speed increases, with some reporting vehicles being clocked at 100 mph or more. Below are examples of the reckless driver behaviors reported throughout the nation:

- State police in **Florida** and **Iowa** are reporting drivers going 20 to 40 miles over the posted speed limit.
- In **Colorado, Indiana, Nebraska** and **Utah**, police have clocked highway speeds of over 100 mph.
- In **New York City**, despite far fewer vehicles on the road, the city's automated speed cameras issued 24,765 speeding tickets citywide on March 27, or nearly double the 12,672 tickets issued daily a month earlier. In Los Angeles, speeds are up by as much as 30% on some streets, prompting changes to traffic lights and pedestrian walk signals.
- Some states are finding reduced crash rates but more serious crashes. In **Massachusetts**, the fatality rate for car crashes is rising, and in Nevada and Rhode Island, state officials note pedestrian fatalities are rising.
- In **Minnesota**, motor vehicle crashes and fatalities have more than doubled compared to the same time period in previous years. Half those deaths were related to speeding or to careless or negligent driving.<sup>2</sup>

According to the International Traffic Safety Data and Analysis Group (IRTAD), speed has a direct influence on crash occurrence and severity. The Insurance Institute for Highway Safety reports that speed influences the risk of crashes and crash injuries in three ways:

- The distance a vehicle travels from the time a driver detects an emergency to the time the driver reacts is increased.
- The distance needed to stop a vehicle once the driver starts to brake is increased.
- The exponential increase in crash energy. For example, when impact speed increases from 40 to 60 mph (a 50% increase), the energy increases by 125%.<sup>1</sup>

The force involved in a crash is directly related to the speed at the time of a crash. In a high-speed crash, a passenger vehicle is subjected to forces where the structure of the vehicle cannot withstand the force of the crash and maintain survival space within the occupant compartment of the vehicle. In addition, in high speed crashes, restraint systems such as airbags and safety belts are incapable of minimizing these higher levels of force.<sup>2</sup>

The Governors Highway Safety Association, the Insurance Institute for Highway Safety, and the National Road Safety Foundation are currently working together to fund and evaluate pilot projects by two states to reduce speeding by encouraging drivers to slow down. The goal of the collaboration is to develop a template for effective speed reduction strategies that other states and communities can eventually duplicate.<sup>3</sup>

As vehicle speeding has increased on the highways there is also an increase of danger to our first responders working along the highways. Best practices such as proper Advanced Warning, Maintenance of Traffic (MOT), protecting the scene, and always keeping your head on swivel while working traffic incidents are vital during this time.

- (1) Speeding Away from Zero: Rethinking a Forgotten Traffic Safety Challenge. Governors Highway Safety Association. January 2019. [https://www.ghsa.org/sites/default/files/2019-09/FINAL\\_GHSASpeeding19\\_REV.pdf](https://www.ghsa.org/sites/default/files/2019-09/FINAL_GHSASpeeding19_REV.pdf)
- (2) Absent Traffic Jams, Many Drivers Getting More Reckless. Governors Highway Safety Association. Web 04.16.2020. <https://www.ghsa.org/resources/news-releases/coronavirus-reckless-driving20>
- (3) Speeding Increases During Pandemic, Prompting Safety Groups To Take Action. Governors Highway Safety Association. Web 03.09.2021. <https://www.ghsa.org/about/news/Forbes/Speed-Pilot21>

Article submitted by Brandy Boccuti, Metric Engineering, Inc.



### T I M TEAM WEBSITE!

[www.swfltim.org](http://www.swfltim.org)

*The Polk County TIM Team is committed to implementing the Quick Clearance principles of Florida's Open Roads Policy through the "3 Cs" of TIM: Communication, Cooperation and Coordination, and providing the public with the best real-time Motorist Information available. Team membership draws from state, regional, and local transportation agencies, public safety providers, and other organizations and companies that service the traveling public. The Teams, sponsored by the FDOT, meet bi-monthly.*

#### Mission

*The TIM Team Program brings together all agencies involved in clearing the roadway crashes with the objective of improving detection, verification, response, and clearance times to expeditiously remove a motor vehicle crash or incident from the roadway while providing the best real-time information to motorists, resulting in a safer highway environment for both incident responders and motorists*

